



PROGRAM SUMMARY

Die Clamping and Changing Systems



Die Clamping Technology

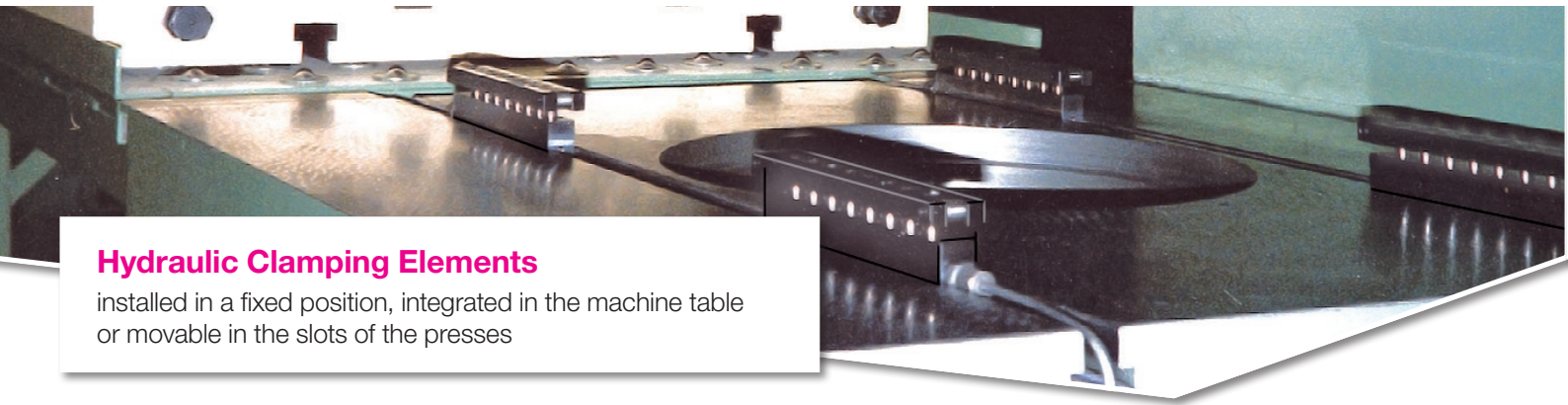
- Hydraulic Clamping Elements
- Electro-mechanical Clamping Elements
- Mechanical Clamping Elements
- Magnetic Clamping Systems
 - Grip Rail Couplings
- Hydraulic Power Units

Die Changing Technology

- Roller, Ball and Transport Bars
 - Die Changing Carts
 - Carrying Consoles
- Rack Systems for Die Storage
 - Push-pull Chain Systems
- Rail-guided Die Changing Carts

Rotor Locks

- On- and Off-shore Rotor Locks



Hydraulic Clamping Elements

installed in a fixed position, integrated in the machine table or movable in the slots of the presses

Hollow Piston Cylinders

for press bed and ram, single acting



2.1300

without spring return



2.1320

with spring return



3.1403

spring clamping
- hydraulic unclamping



3.2130

hydraulic clamping
and spring unclamping

Spring Clamping Cylinders

which clamp mechanically by Belleville springs



2.1400

with hydraulic return



3.1403

spring clamping
- hydraulic unclamping

Double-T Clamping Bars

hydraulic, for T-slots



2.1832

single acting
with spring return



2.1832

double acting
without carrying rollers



2.1832

double acting
with carrying rollers

Clamping Bars

with press-in or built-in piston



2.2095

single acting
with spring return



2.2096

single acting
with spring return



2.2097

double acting

Block Clamps

with self-locking mechanical lock



2.2480

double acting

Swing and Pivot Cylinders

hydraulic clamping cylinders with tie rod, which swing or tilt into the clamping position



2.1833

Swivel and pull clamps
with 90° swivel angle
and position monitoring



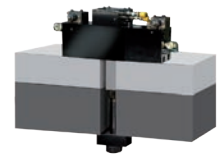
2.2185

Pivot and pull clamps



2.2230

Swing Sink Clamps
for exterior clamping



2.2240


Wedge swing clamps
with mechanical lock



Wedge Clamps for Tapered Clamping Edge



2.2401
without and with position monitoring at the side




2.2402
with adjustable position monitoring at the back




2.2403
with safety step



2.2404
with form-fit safety step and position monitoring



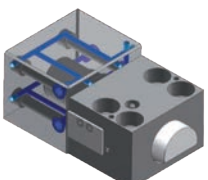
2.2405
with locking bolt



2.2407
with sequence valve control for high temperature ranges



2.2409
with single valve control for individual control



2.2410
with cooling circuit for temperatures up to 250 °C

Wedge Clamps for Flat Clamping Edge



2.2450
clamping with spring force and hydraulic unclamping



2.2451
hydraulic clamping and unclamping



2.2460
hydraulic clamping and unclamping



2.2503
Arch Clamps

Swing Sink Clamps

with 90° swing angle



4.2150
Swing Sink Clamps



4.2170
Swing Clamps with 90° swing angle

Pull-clamping Elements


hydraulic pull-type cylinders with tie rod



4.2180
Pull-clamping elements



4.2350
Pull Clamps with T-Slot



4.2351
Pull Clamps with T-Slot

Hydraulic Clamping Elements
Hydraulic Power Units
Hydraulic Accessories

Hydraulic Clamping Cylinder for Insertion in T-slots



3.2202
Sliding clamps
 compact



3.2204
Sliding clamps
 classic



3.2206
Angular clamps

Built-in Pistons



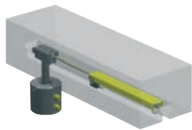
4.1070
 with spring return

Rapid Clamping Systems

automatic shifting units with clamping cylinders



3.2280
Flexline
 with push chain



3.2295
 with
 pneumatic cylinder



RHI-WZ003
Flexline I4.0
 with condition monitoring

Grip Rail Couplings

quick clamping system for grip rails on transfer presses



4.2900
 hydraulisch, mechanisch,
 elektro- oder hydro-mechanisch



RHI-WZ001
 coupling and clamping
 without energy

Hydraulic Power Units

hydraulic clamping power units and clamping pumps



7.1600
Power Units
 500/250/160 bar
 0,82/2,1/3,5 l/min



7.1800
**Power Units in
 Modular Design**
 30 to 500 bar
 0,9 to 12 l/min



8.800
Hydraulic Clamping Pump
 manually operated
 100, 200 and 500 bar

Hydraulic Accessories



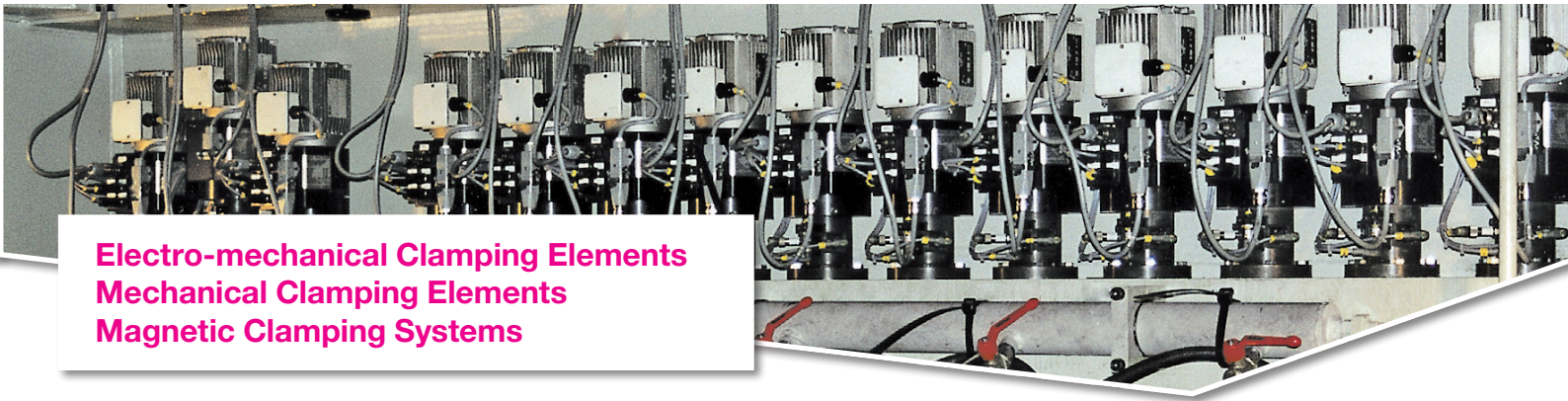
11.2800
Fittings and pipes



11.3800
**High-pressure hoses,
 connector blocks couplings
 and plug-in connectors**



11.9200
**Pressure switches,
 valves, pressure gauges
 and hydraulic oil**



Electro-mechanical Clamping Elements
Mechanical Clamping Elements
Magnetic Clamping Systems

Electro-mechanical Clamping Elements



5.2620

Tenon-Type Clamps
self-locking
with position monitoring



5.2640

Swivel and Pull Clamps
self-locking
with position monitoring



5.2650

Swing Clamps
with position monitoring



5.2670

Wedge Clamps
for flat clamping edge

Mechanical Clamping Elements



6.2210

Sliding Clamps
with integral
high-pressure spindle



6.2270

High-Pressure Spindles, mechanical
with integrated wedge system



6.2274

Clamping Nuts mechanical
with through-hole thread,
without clamping force display



6.2275

Clamping Nuts mechanical
with blind hole thread,
without clamping force display

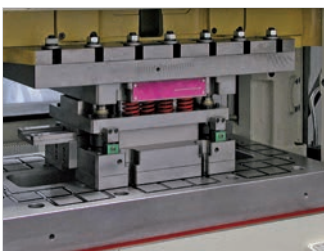


6.2276

Clamping Nuts mechanical
with through-hole thread
and optional clamping force display

Magnetic Clamping Systems

used in forming machines for sheet metal forming, in injection moulding machines, die casting machines, rubber moulding presses or mould carriers. Suitable for operating temperatures up to 240°C (464 °F).



9.1132

M-TECS

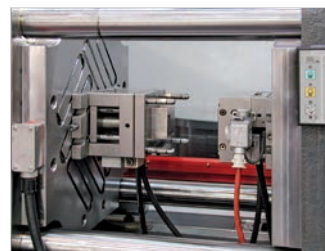
for sheet metal forming



9.1132

M-TECS

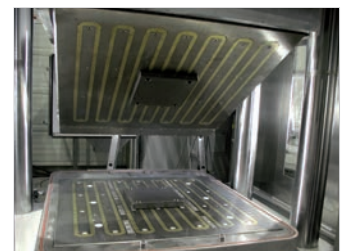
for mould carrier systems



9.1134

M-TECS

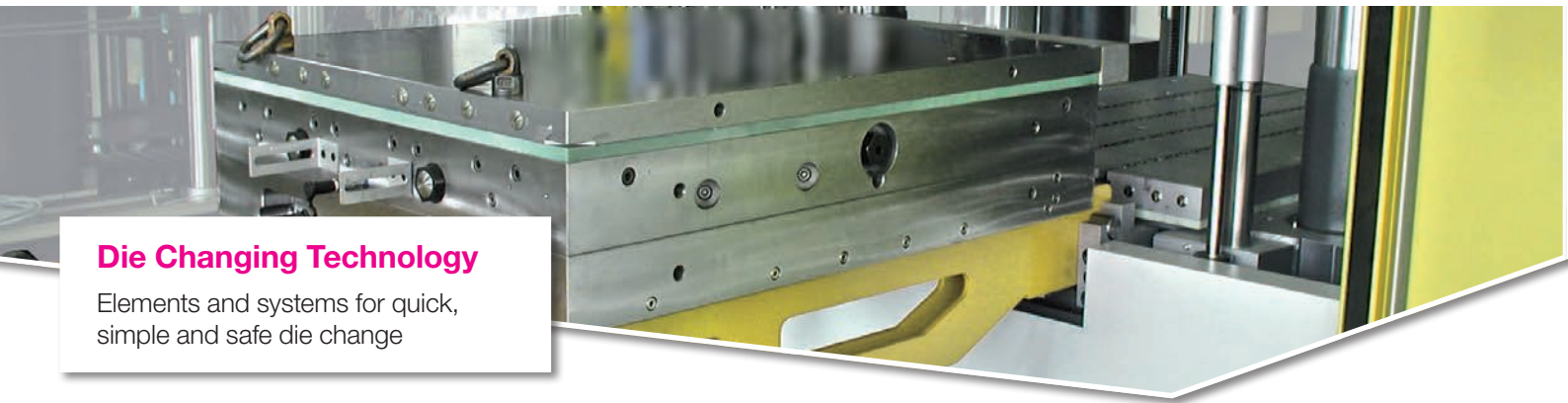
for injection moulding machines



9.1136

M-TECS

for rubber presses
and die casting machines



Die Changing Technology

Elements and systems for quick, simple and safe die change

Roller, Ball and Transport Bars

Roller Bars



8.18340

hydraulic
with lifting of the bar

Ball Bars



8.18341

hydraulic
with lifting of the individual balls

Roller Bars



8.18342

hydraulic
with lifting of the individual rollers

Ball Bars



8.18343

mechanical
with spring pack

Roller Bars



8.18344

mechanical
with spring pack

Roller and Ball Inserts



8.18345

mechanical
with spring pack

Roller Conveyors



8.18347

mechanical
without spring pack

Die Changing Carts

RW 500



8.8900

manually movable
max. 500 kg

RW 1000



8.8901

manually movable
max. 1,000 kg

RWA 1600



8.8902

with electro-hydraulic
lifting platform
max. 1,600 kg

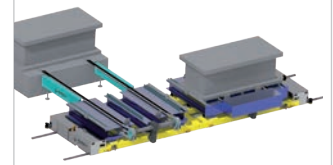
RWA 4000



8.8905

with electric drive
and pull-push chain
max. 4,000 kg

RWS, rail-guided



8.8920

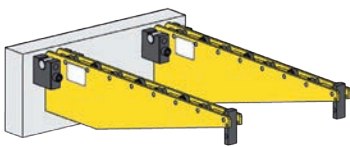
with electric drive and
integrated push-pull system
max. 40 t



**Die Carrying and Changing Consoles
Rack Systems for Die Storage
On- and Off-shore Rotor Locks**

Carrying Consoles

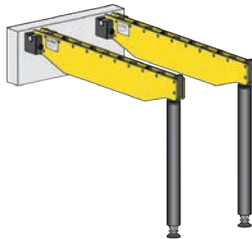
Carrying Consoles



8.18350

hanging, up to 30 kN

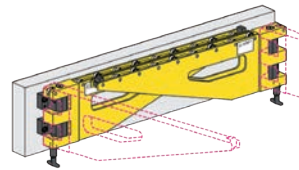
Carrying Consoles



8.18351

supported, up to 250 kN

Carrying Consoles



8.18352

swivelling, up to 60 kN

Die Changing Consoles

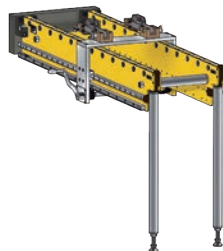
Die Changing Consoles



8.18353

electrically driven
with push-pull drive
up to 25 t

Die Changing Consoles



8.18354

manually driven
with crank handle
and transmission gearing
up to 6 t

Die Changing Consoles



8.18360

electrically driven
with push-pull chain drive
up to 50 t

Push-pull Chain Drive



8.18360

directly flanged

Rack Systems for Die Storage

Rack Systems



8.8910

with roller conveyors or ball tables

On- and Off-shore Rotor Locks

Rotorlock



wz.roemheld.de/en/rotorlock

Locking cylinder to fix rotors of large off-shore
wind power plants for maintenance work



Everything for a quick and safe die change on presses, machines and plants

from storage, transport and insertion to positioning and clamping of dies

Complete solutions from a single source!

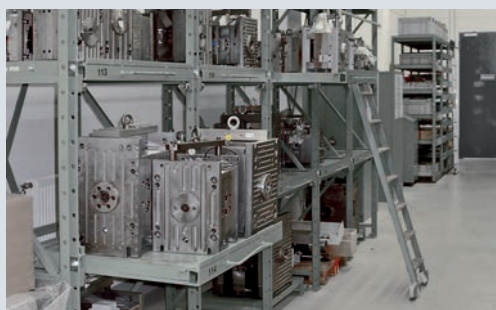
Your advantages

- Quick die change - easy and safe
- Reduction of set-up times
- Possible automation of the die change
- Higher productivity

RACK SYSTEMS FOR DIE STORAGE

Heavy duty shelving with integrated ball and roller bars

STORAGE



DIE CHANGING CARTS

for the safe handling of heavy dies

TRANSPORT



CARRYING CONSOLES / ROLLER AND BALL BARS

for the movement of dies

INSERTION



DIE CLAMPING SYSTEMS

hydraulic, magnetic,
elektro-mechanical or mechanical

POSITIONING AND CLAMPING



Römheld GmbH

Friedrichshütte
Römheldstraße 1-5
35321 Laubach
Germany

Tel.: +49 6405 89-0
info@roemheld.de
www.roemheld.com

Technical Advice

Hilma-Römheld GmbH

Auf der Landeskrone 2
57234 Wilnsdorf-Wilden
Germany

Tel.: +49 2739 4037-0
info@hilma.de
www.roemheld.com