



**ROEMHELD**  
HILMA ■ STARK

## PROGRAM SUMMARY

# Die Clamping and Changing Systems



### Die Clamping Technology

- Hydraulic Clamping Elements
- Electro-mechanical Clamping Elements
- Mechanical Clamping Elements
- Magnetic Clamping Systems
  - Grip Rail Couplings
- Hydraulic Power Units

### Die Changing Technology

- Roller, Ball and Transport Bars
  - Die Changing Carts
  - Carrying Consoles
- Rack Systems for Die Storage
  - Push-pull Chain Systems
- Rail-guided Die Changing Carts

### Rotor Locks

- On- and Off-shore Rotor Locks

ws.roemheld.com

wz.roemheld.com

mh.roemheld.com



**Discover the  
QDC app now!**

<https://wz-app.roemheld.de/en/home>



[www.roemheld.com](http://www.roemheld.com)

## Hydraulic Clamping Elements

installed in a fixed position, integrated in the machine table or movable in the slots of the presses

### Hollow Piston Cylinders

for press bed and ram, single acting



**2.1300**

without spring return



**2.1320**

with spring return



**2.1330**

**Short-Stroke**  
with spring return



**3.2130**

hydraulic clamping  
and spring unclamping

### Spring Clamping Cylinders

which clamp mechanically by Belleville springs



**2.1400**

with hydraulic return



**3.1403**

spring clamping  
- hydraulic unclamping

### Double-T Clamping Bars

hydraulic, for T-slots



**2.1832**

single acting  
with spring return



**2.1832**

double acting  
without carrying rollers



**2.1832**

double acting  
with carrying rollers

### Clamping Bars

with press-in or built-in piston



**2.2095**

single acting  
with spring return



**2.2096**

single acting  
with spring return



**2.2097**

double acting

### Block Clamps

with self-locking mechanical lock



**2.2480**

double acting

### Swing and Pivot Cylinders

hydraulic clamping cylinders with tie rod, which swing or tilt into the clamping position



**2.1833**

**Swivel and pull clamps**  
with 90° swivel angle  
and position monitoring



**2.2185**

**Pivot and pull clamps**



**2.2230**

**Swing Sink Clamps**  
for exterior clamping



**2.2240**

**Wedge swing clamps**  
with mechanical lock



### Wedge Clamps for Tapered Clamping Edge



**2.2401**

without and with position  
monitoring at the side



**2.2402**

with adjustable position  
monitoring at the back



**2.2403**

with safety step



**2.2404**

with form-fit safety step  
and position monitoring



**2.2405**

with locking bolt



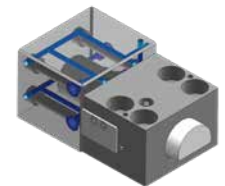
**2.2407**

with sequence valve control  
for high temperature ranges



**2.2409**

with single valve control  
for individual control



**2.2410**

with cooling circuit for  
temperatures up to 250 °C

### Wedge Clamps for Flat Clamping Edge



**2.2450**

clamping with spring force  
and hydraulic unclamping



**2.2451**

hydraulic clamping  
and unclamping



**2.2460**

hydraulic clamping  
and unclamping



**2.2503**

Arch Clamps

### Swing Sink Clamps

with 90 ° swing angle



**4.2150**

Swing Sink Clamps



**4.2170**

Swing Clamps  
with 90° swing angle



**4.2180**

Pull-clamping  
elements



**4.2350**

Pull Clamps  
with T-Slot



**4.2351**

Pull Clamps  
with T-Slot

### Pull-clamping Elements

hydraulic pull-type cylinders with tie rod

## Hydraulic Clamping Elements Hydraulic Power Units Hydraulic Accessories

### Hydraulic Clamping Cylinder for Insertion in T-slots



**3.2202**  
Sliding clamps  
compact



**3.2204**  
Sliding clamps  
classic



**3.2206**  
Angular clamps

### Built-in Pistons



**4.1070**  
with spring return

### Rapid Clamping Systems



**3.2260**  
Flexline-R  
sturdy version



**3.2280**  
Flexline  
with push chain



**3.2295**  
with  
pneumatic cylinder



**RHI-WZ003**  
Flexline I4.0  
with condition monitoring

### Grip Rail Couplings



**4.2900**  
hydraulic, mechanical,  
electrical or  
hydro-mechanical



**RHI-WZ001**  
coupling and clamping  
without energy

### Hydraulic Power Units



**7.1600**  
Power Units  
500/250/160 bar  
0,82/2,1/3,5 l/min



**7.1800**  
Power Units in  
Modular Design  
30 to 500 bar  
0,9 to 12 l/min



**8.800**  
Hydraulic Clamping  
Pump  
manually operated  
100, 200 and 500 bar

### Hydraulic Accessories



**11.2800**  
Fittings and pipes



**11.3800**  
High-pressure hoses,  
connector blocks couplings  
and plug-in connectors



**11.9200**  
Pressure switches,  
valves, pressure gauges  
and hydraulic oil





## Electro-mechanical Clamping Elements Mechanical Clamping Elements

### Electro-mechanical Clamping Elements



**5.2620**

**Tenon-Type Clamps**  
self-locking  
with position monitoring



**5.2640**

**Swivel and Pull Clamps**  
self-locking  
with position monitoring



**5.2650**

**Swing Clamps**  
with position monitoring



**5.2670**

**Wedge Clamps**  
for flat or tapered clamping edge

### Mechanical Clamping Elements



**6.2210**

**Sliding Clamps**  
with integral  
high-pressure spindle



**6.2270**

**High-Pressure  
Spindles, mechanical**  
with integrated wedge  
system



**6.2274**

**Clamping Nuts  
mechanical**  
with through-hole thread,  
without clamping force  
display



**6.2275**

**Clamping Nuts  
mechanical**  
with blind hole thread,  
without clamping force  
display



**6.2276**

**Clamping Nuts  
mechanical**  
with through-hole thread  
and optional clamping  
force display

## Die Changing Technology

Elements and systems for quick, simple and safe die change

### Roller, Ball and Transport Bars

#### Roller Bars



**8.18340**

hydraulic  
with lifting of the bar

#### Ball Bars



**8.18341**

hydraulic  
with lifting of the individual balls

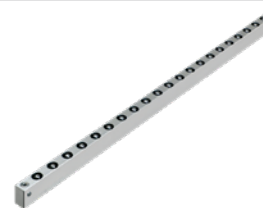
#### Roller Bars



**8.18342**

hydraulic  
with lifting of the individual rollers

#### Ball Bars



**8.18343**

mechanical  
with spring pack

#### Roller Bars



**8.18344**

mechanical  
with spring pack

#### Roller and Ball Inserts



**8.18345**

mechanical  
with spring pack

#### Roller Conveyors



**8.18347**

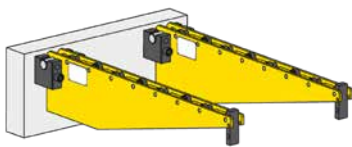
mechanical  
without spring pack



## Carrying Consoles Die Changing Consoles

### Carrying Consoles

#### Carrying Consoles



**8.18350**

hanging, up to 30 kN

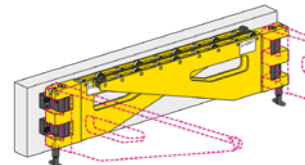
#### Carrying Consoles



**8.18351**

supported, up to 250 kN

#### Carrying Consoles



**8.18352**

swivelling, up to 60 kN

### Die Changing Consoles

#### Die Changing Consoles



**8.18353**

electrically driven  
with push-pull drive  
up to 25 tons

#### Die Changing Consoles



**8.18354**

manually driven  
with crank handle  
and transmission gearing  
up to 6 tons

#### Die Changing Consoles



**8.18360**

electrically driven  
with push-pull chain drive  
up to 50 tons

#### Push Chain Direct System



**8.18362**

**with Push-pull System**  
electrically driven  
with push chain drive  
up to 40 tons

## Die Changing Carts Rack Systems for Die Storage

### Die Changing Carts

#### RW/RWA 500



**8.8900**

manually movable  
without and with  
integrated auxiliary drive  
max. load capacity 500 kg

#### RW/RWA 1000



**8.8901**

manually movable  
without and with  
integrated auxiliary drive  
max. load capacity 1,000 kg

#### RWA 1600



**8.8902**

electrically movable  
electro-hydraulic lifting platform  
without and with push-pull system  
max. load capacity 1,600 kg

#### RWA 2500/4000/6000



**8.8904**

electrically movable  
electro-hydraulic lifting platform  
with push-pull system  
max. load capacity 2,500,  
4,000 or 6,000 kg

#### RWT



**8.8905**

electrically movable  
electro-hydraulic lifting platform  
with push-pull system  
max. load capacity 4,000 kg

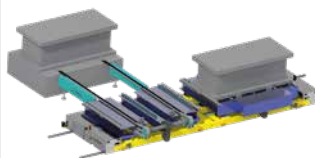
#### Die Load Platform RLP



**8.8915**

**hydraulic**  
with die changing table  
hand pump and  
hydraulic ball bars  
max. load capacity 1,000 kg

#### Die Changing Cart RWS



**8.8920**

**rail-guided**  
electrically movable  
with integrated push-pull system  
max. load capacity 40 tons

### Rack Systems for Die Storage

#### Rack Systems



**8.8910**

with integrated ball or roller bars





## Magnetic Clamping Systems On- and Off-shore Rotor Locks

### Magnetic Clamping Technology



**9.1132**

**Magnetic Clamping Systems  
for Metal Stamping  
R-MAG-M**

operating temperature  
up to 100°C



**9.1132**

**Magnetic Clamping Systems  
for Mould carrier  
R-MAG-F**

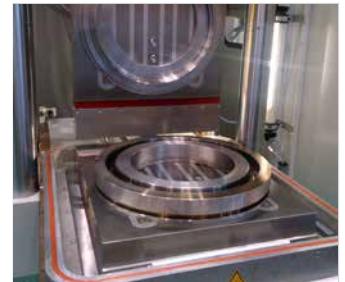
operating temperature  
up to 100°C



**9.1134**

**Magnetic Clamping Systems  
for Plastic Injection Molding  
R-MAG-P**

operating temperature  
up to 150°C



**9.1136**

**Magnetic Clamping Systems  
for Rubber Molding & Presses  
R-MAG-R**

operating temperature  
up to 230°C

### On- and Off-shore Rotor Locks

#### Rotorlock



[wz.roemheld.de/en/rotorlock](http://wz.roemheld.de/en/rotorlock)

Locking cylinder to fix rotors of large off-shore  
wind power plants for maintenance work



**ROEMHELD**  
HILMA ■ STARK

## Everything for a quick and safe die change on presses, machines and plants

from storage, transport and insertion to positioning and clamping of dies

### Complete solutions from a single source!

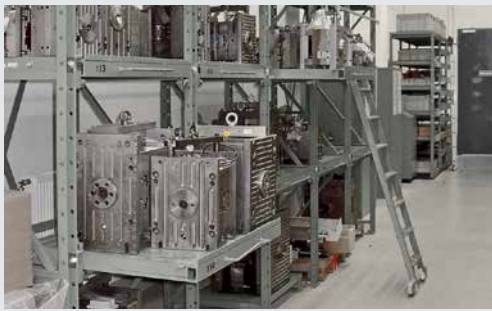
#### Your advantages

- Quick die change - easy and safe
- Reduction of set-up times
- Possible automation of the die change
- Higher productivity

STORAGE

#### RACK SYSTEMS FOR DIE STORAGE

Heavy duty shelving with integrated  
ball and roller bars



TRANSPORT

#### DIE CHANGING CARTS

for the safe handling  
of heavy dies



INSERTION

#### CARRYING CONSOLES / ROLLER AND BALL BARS

for the movement of dies



POSITIONING AND CLAMPING

#### DIE CLAMPING SYSTEMS

hydraulic, magnetic,  
elektro-mechanical or mechanical



#### Römhheld GmbH

Friedrichshütte  
Römhheldstraße 1–5  
35321 Laubach  
Germany

Tel.: +49 6405 89-0  
info@roemheld.de  
www.roemheld.com

#### Technical Advice

#### Hilma-Römhheld GmbH

Auf der Landeskrone 2  
57234 Wilnsdorf-Wilden  
Germany

Tel.: +49 2739 4037-200  
info@roemheld.de  
www.roemheld.com