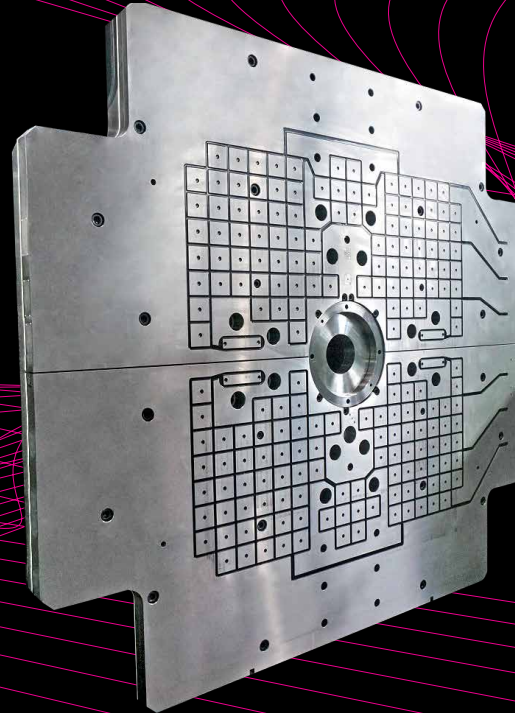
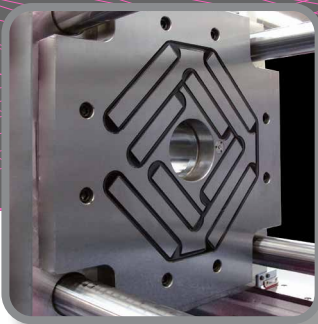
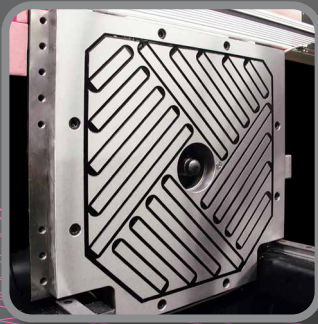
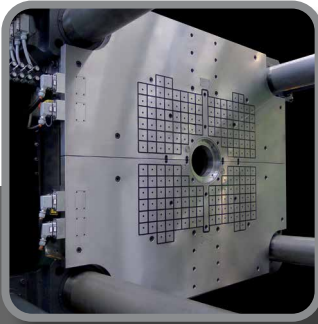




**ROEMHELD**  
HILMA ■ STARK



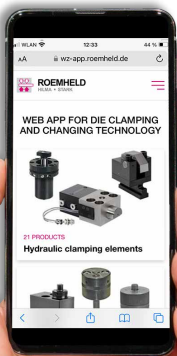
## Magnetic Clamping Systems

# M-TECS P

for plastics processing

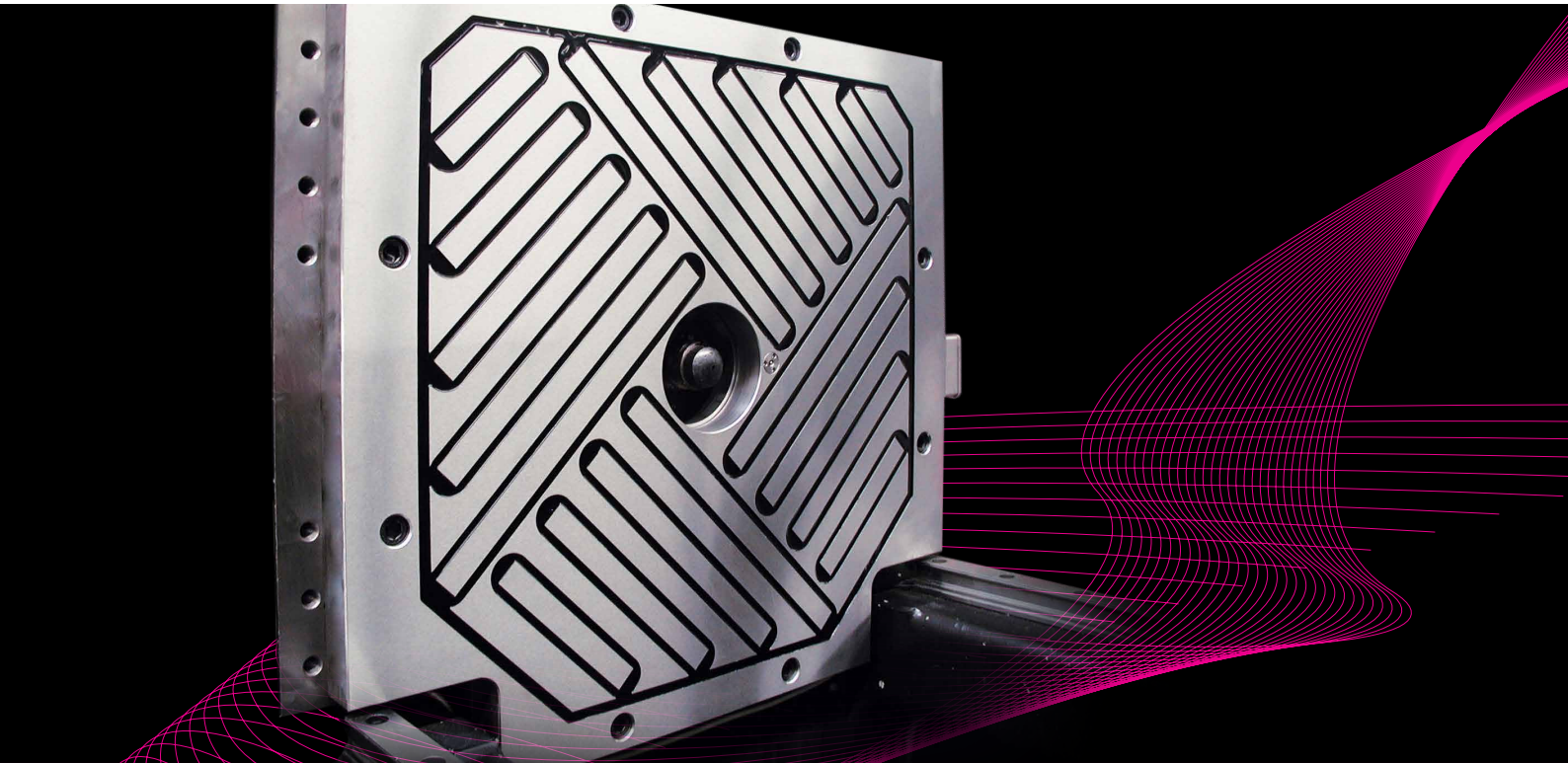
Discover the  
WZ app now!

<https://wz-app.roemheld.de/en/home>



# Magnetic Clamping Systems

## M-TECS P



## Quality and Experience

ROEMHELD stands for productive solutions in industrial production technology, clamping technology, assembly, and drive technology. Our innovative technology complements the portfolio in terms of magnetic clamping systems.

# Customer benefit of magnetic clamping systems



**ROEMHELD**  
HILMA ■ STARK

## QUICK

Moulds are clamped  
in one second at the  
touch of a button

## PROFITABLE

Setup cost optimization  
by mould change  
in a few minutes only

## FLEXIBLE

Standardization  
of moulds no longer  
required

## ERGONOMIC

Safe mould handling  
with ease

## RELIABLE

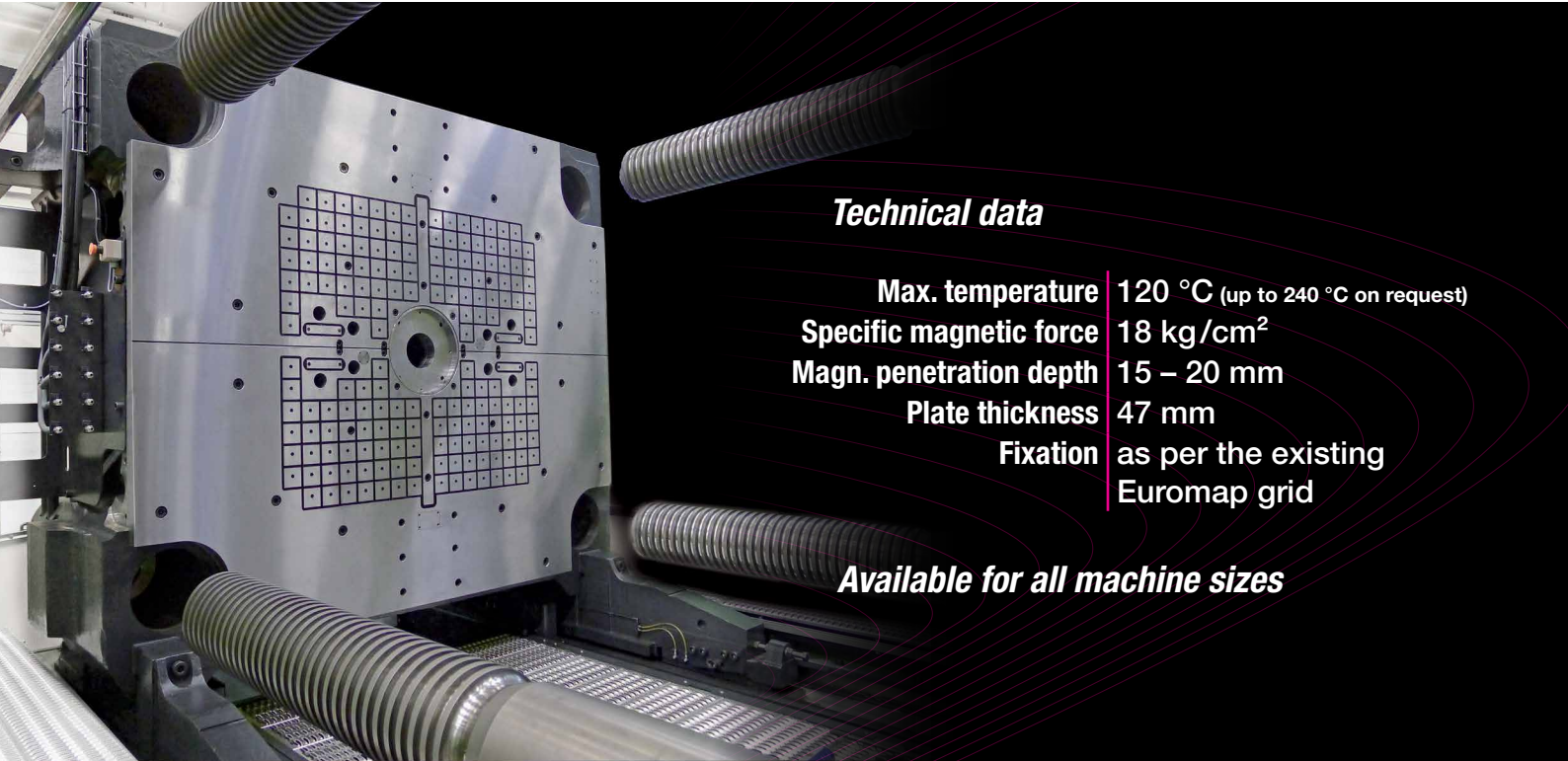
Constant magnetic  
clamping force even in  
case of power failure

## SAFE

Various sensors monitor  
the entire clamping cycle

# M-TECS P

for plastics processing



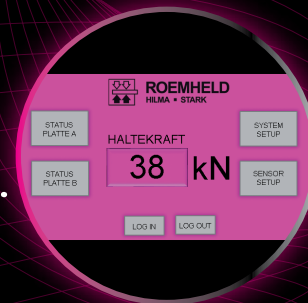
## **Technical data**

<b>Max. temperature</b>	120 °C (up to 240 °C on request)
<b>Specific magnetic force</b>	18 kg/cm <sup>2</sup>
<b>Magn. penetration depth</b>	15 – 20 mm
<b>Plate thickness</b>	47 mm
<b>Fixation</b>	as per the existing Euromap grid

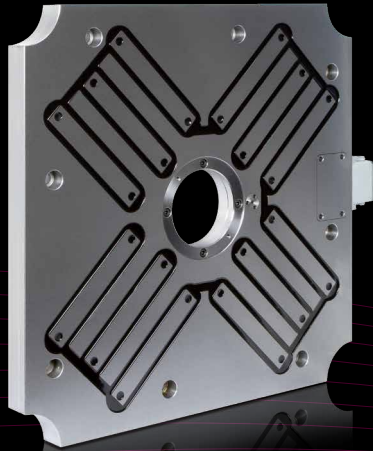
**Available for all machine sizes**



- **Inductive limit switch**  
*to identify the mould contact .....*
- **Permanent coil monitoring**  
*signals minimum mould movement*
- **Temperature sensor protects**  
*the magnetic clamping plates against overheating*
- **Force sensor with output on separate**  
*display or machine panel .....*



# Pole technologies

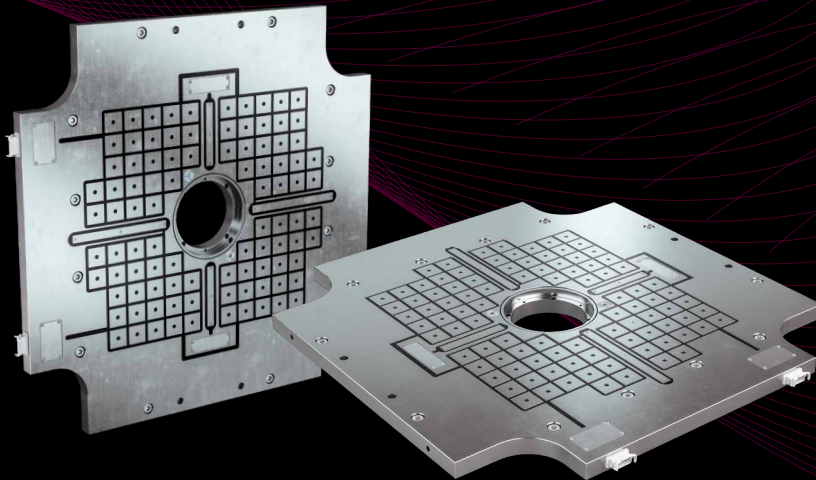
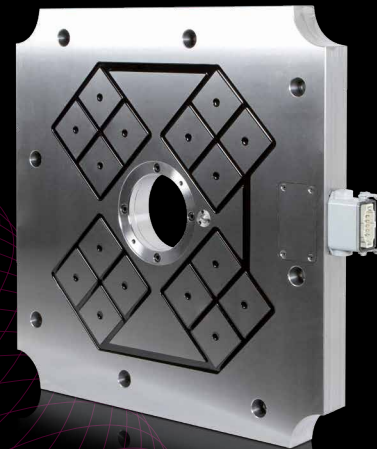


## LONG POLE TECHNOLOGY

- Especially suitable for small machines
- Optimum utilization of the available surface by flexible pole arrangement
- Enhanced performance with small moulds due to concentration effect
- Available for maximum operating temperatures of 240 °C

## SQUARE POLE TECHNOLOGY

- Especially suitable for large machines
- Maximum magnetic clamping force with full-surface cover
- Available for all machine sizes



## COMBINATION

Combines the advantages of both pole technologies by the combination of long and square poles

# Electric control M1C / M2C



**ROEMHELD**  
HILMA ■ STARK

Highest safety standards  
as per EN201 and EN289

Control via remote control  
or machine panel

Simple error diagnosis  
by readout

Easy and safe operation

IP54 splash-proof

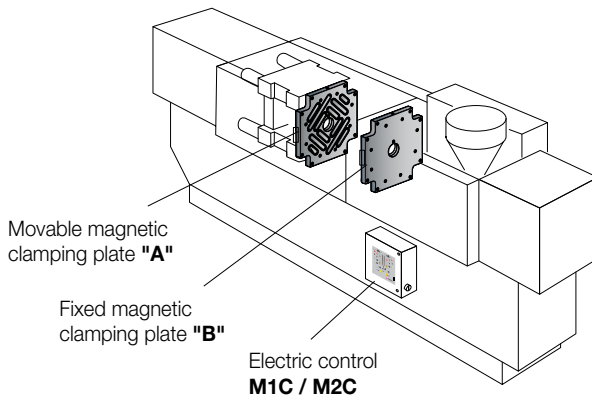
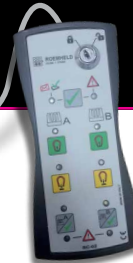
Error code indication on the LCD display

Painting in preferred colour

Integration via  
EUROMAP interface

Exchangeable master module  
for easy maintenance

Key switch protects  
against unauthorized operation



Movable magnetic  
clamping plate "A"

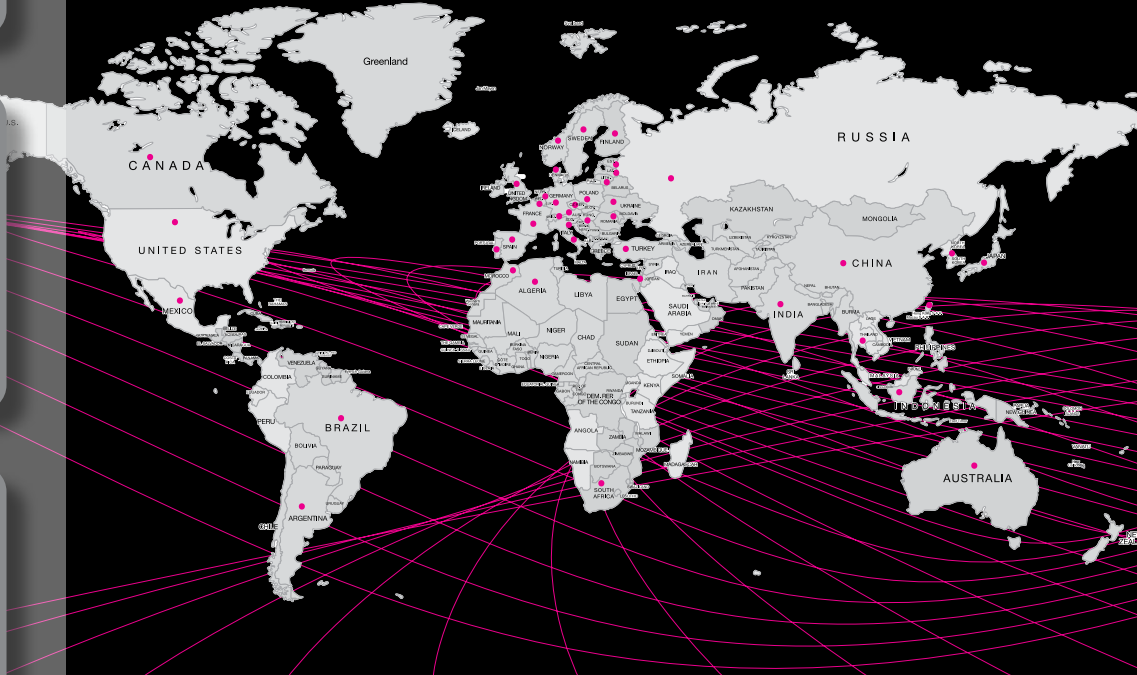
Fixed magnetic  
clamping plate "B"

Electric control  
**M1C / M2C**



**ROEMHELD**  
HILMA ■ STARK

### Global competence



[wz.roemheld.com](http://wz.roemheld.com)

Magnetic clamping systems  
M-TECS also available for:

- rubber processing
- metal forming

**Hilma-Römheld GmbH**  
Auf der Landeskrone 2  
57234 Wilnsdorf-Wilden, Germany

Tel.: +49 2739 4037 200  
[info@roemheld.de](mailto:info@roemheld.de)  
[www.roemheld.com](http://www.roemheld.com)

Products for productivity